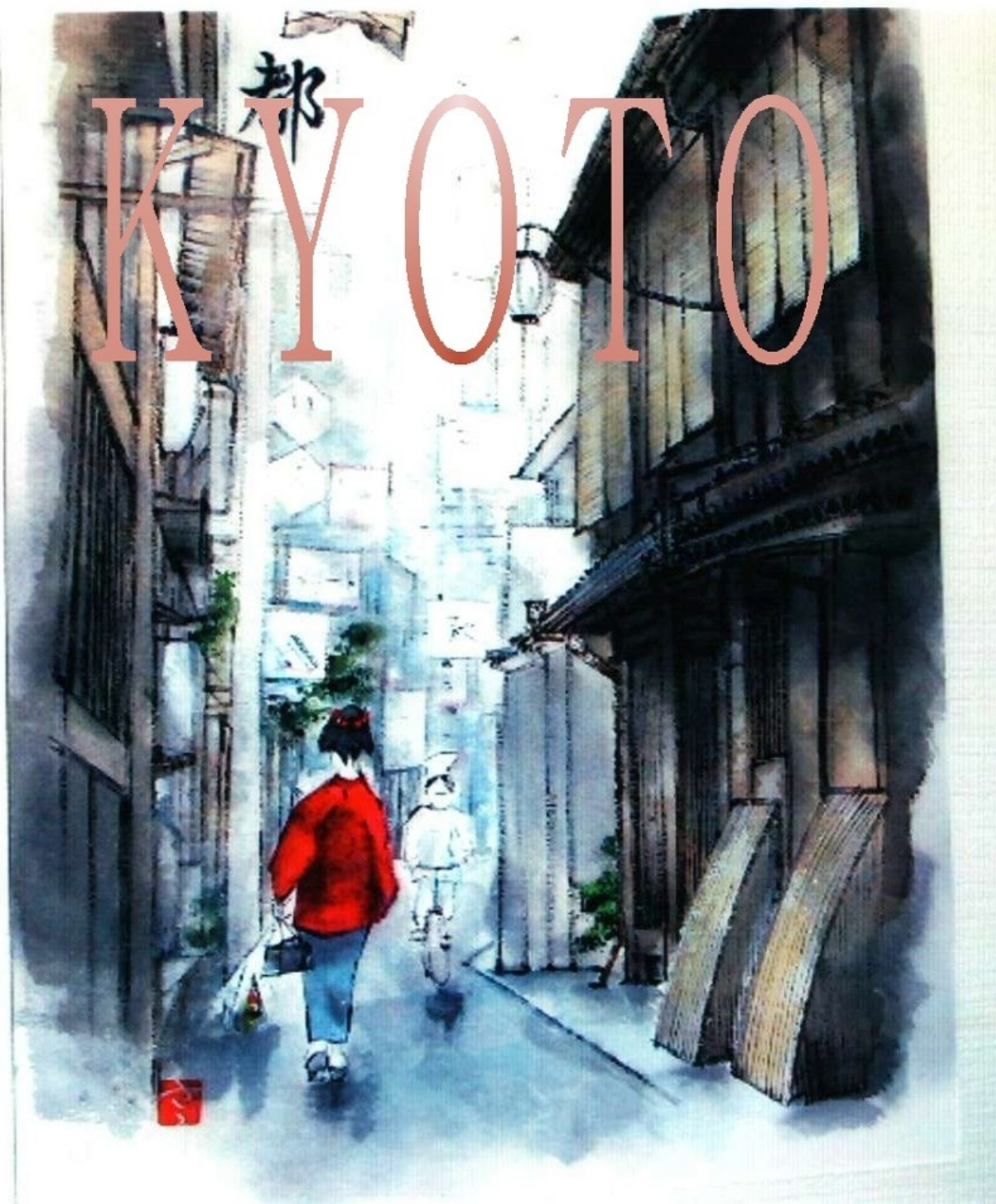


# KYOTO

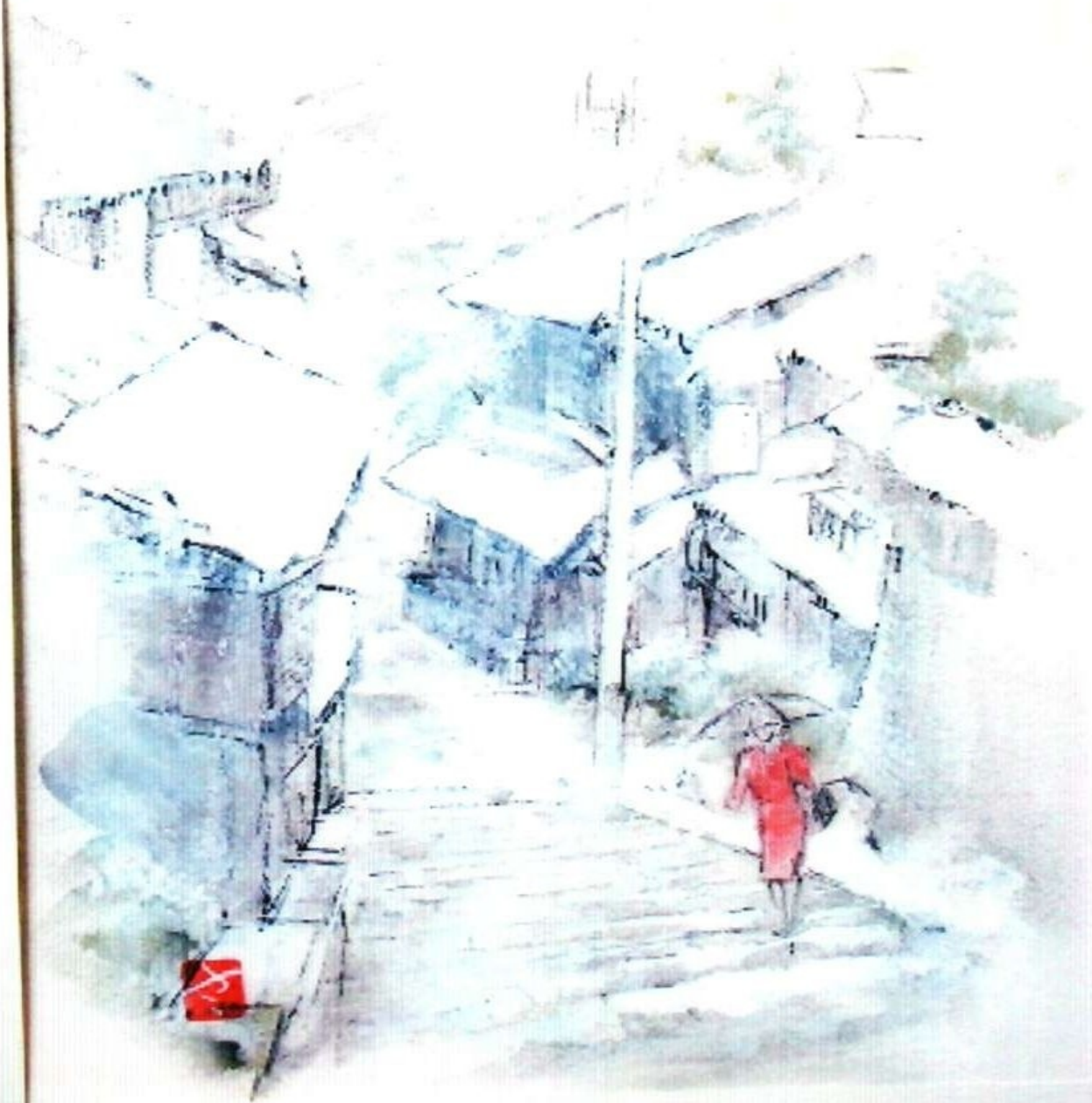


先斗町



三年坂

三年坂の雪



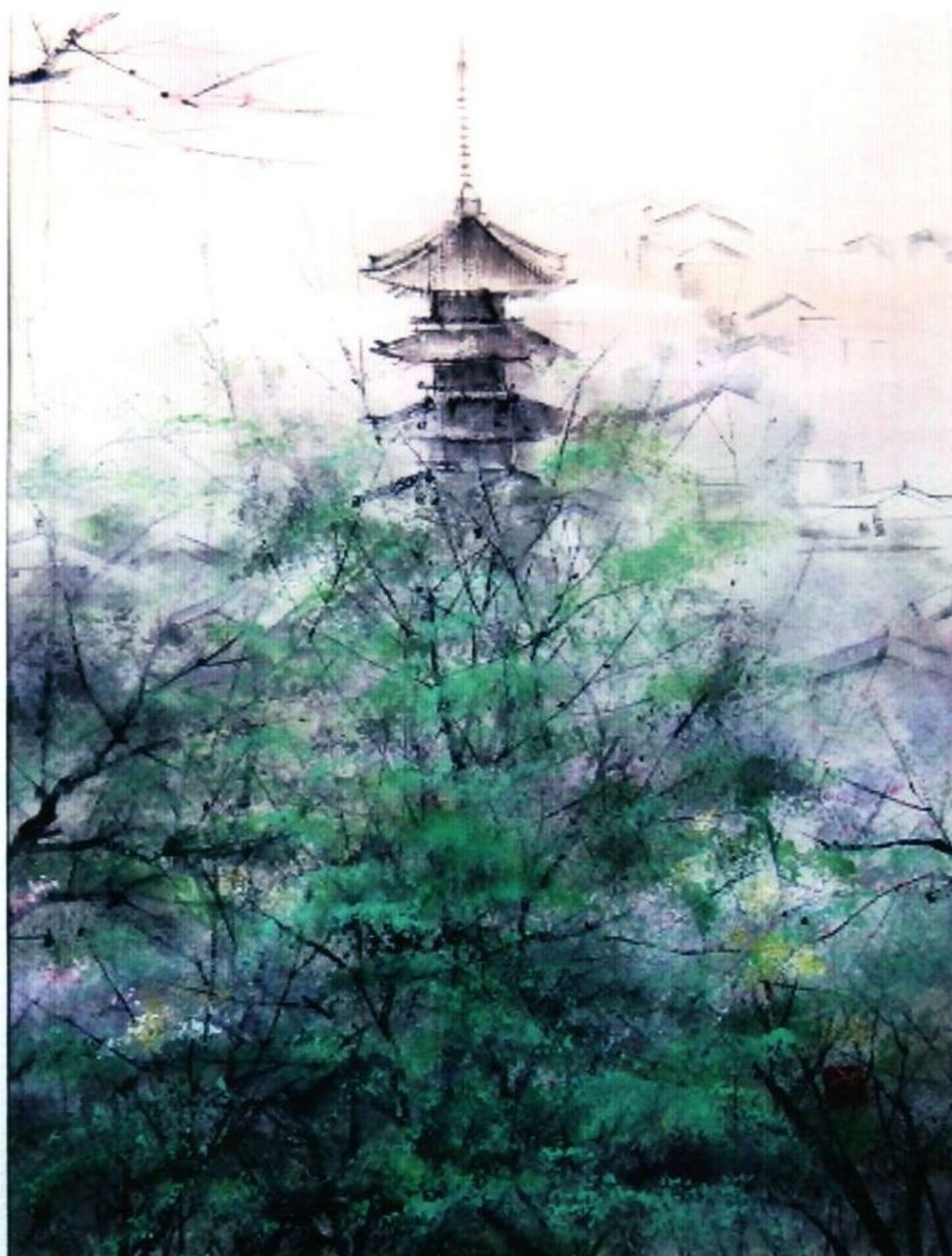


三条大橋

都



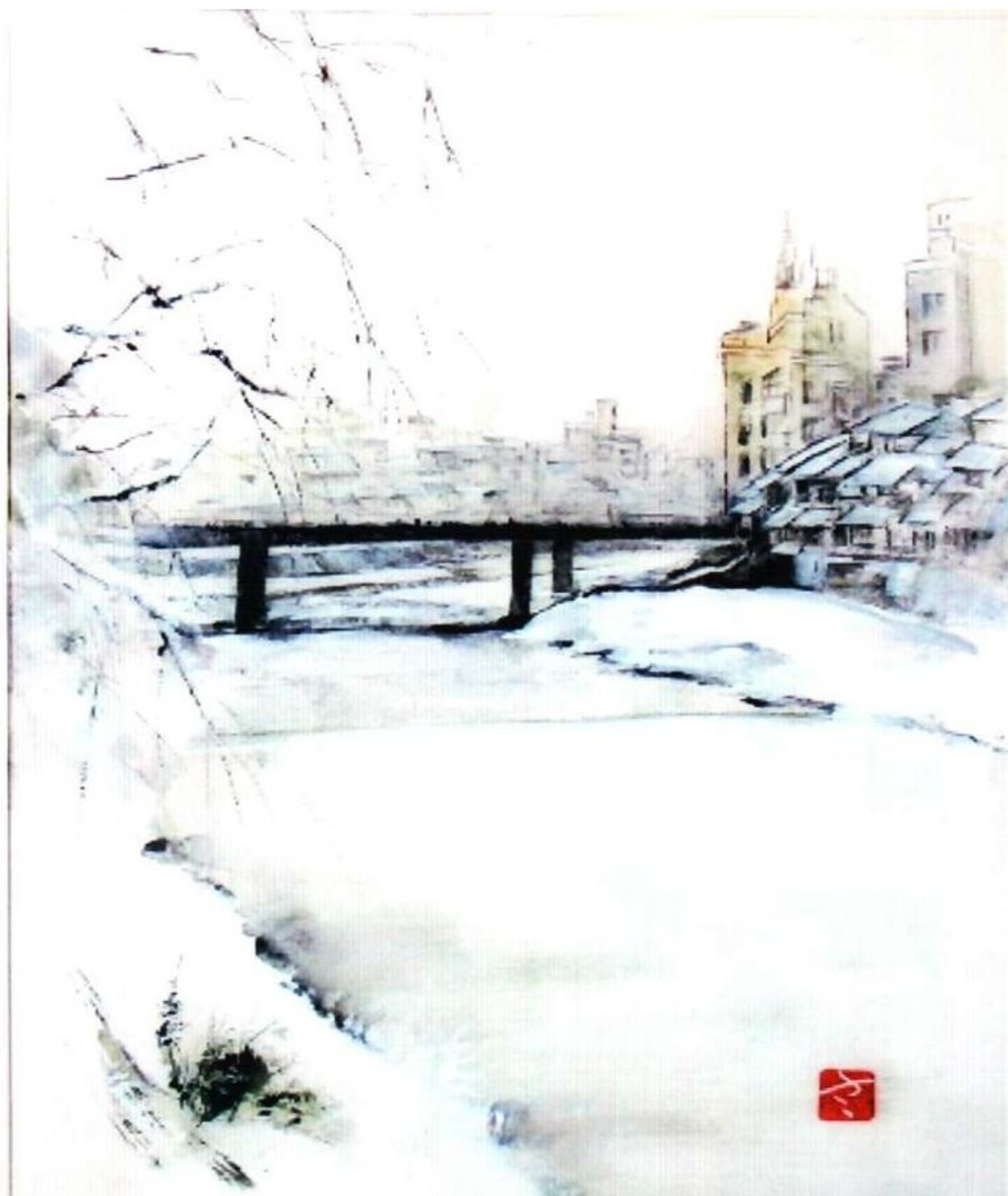
先斗町



八坂の塔



円山の桜



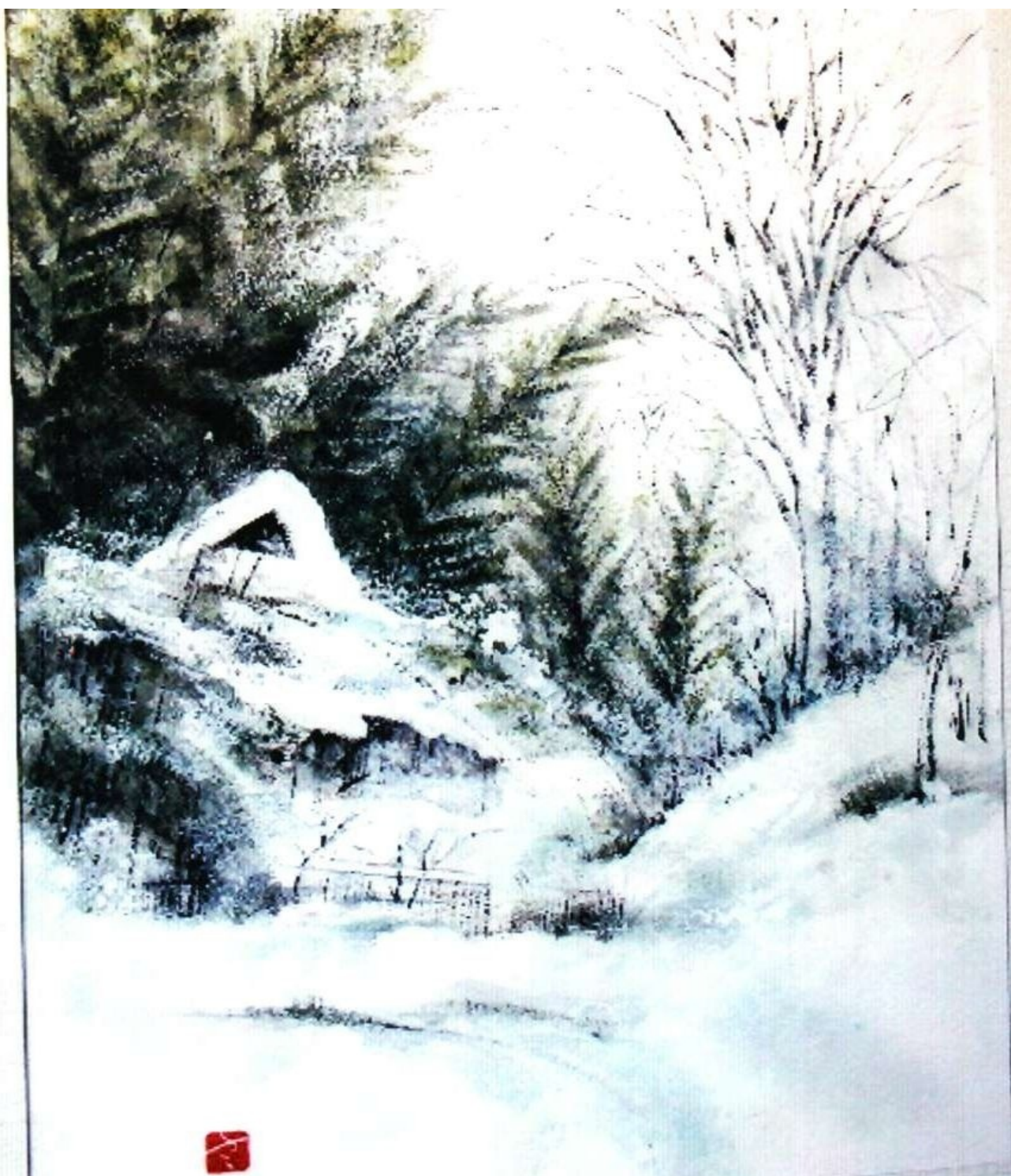
冬の四条大橋





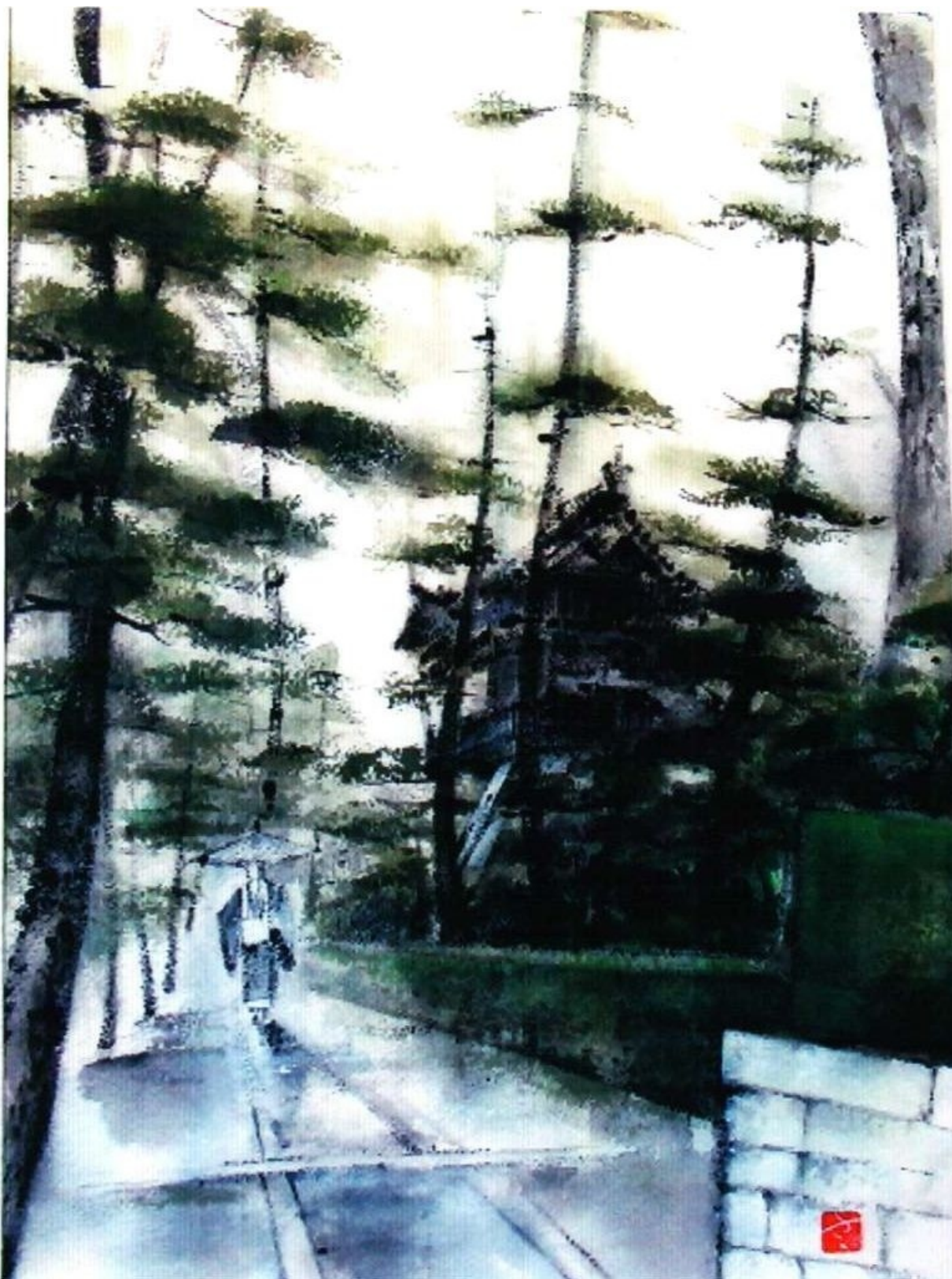


大原の冬



大原の冬





大德寺境内



大沢の池



圓崎のレストラン

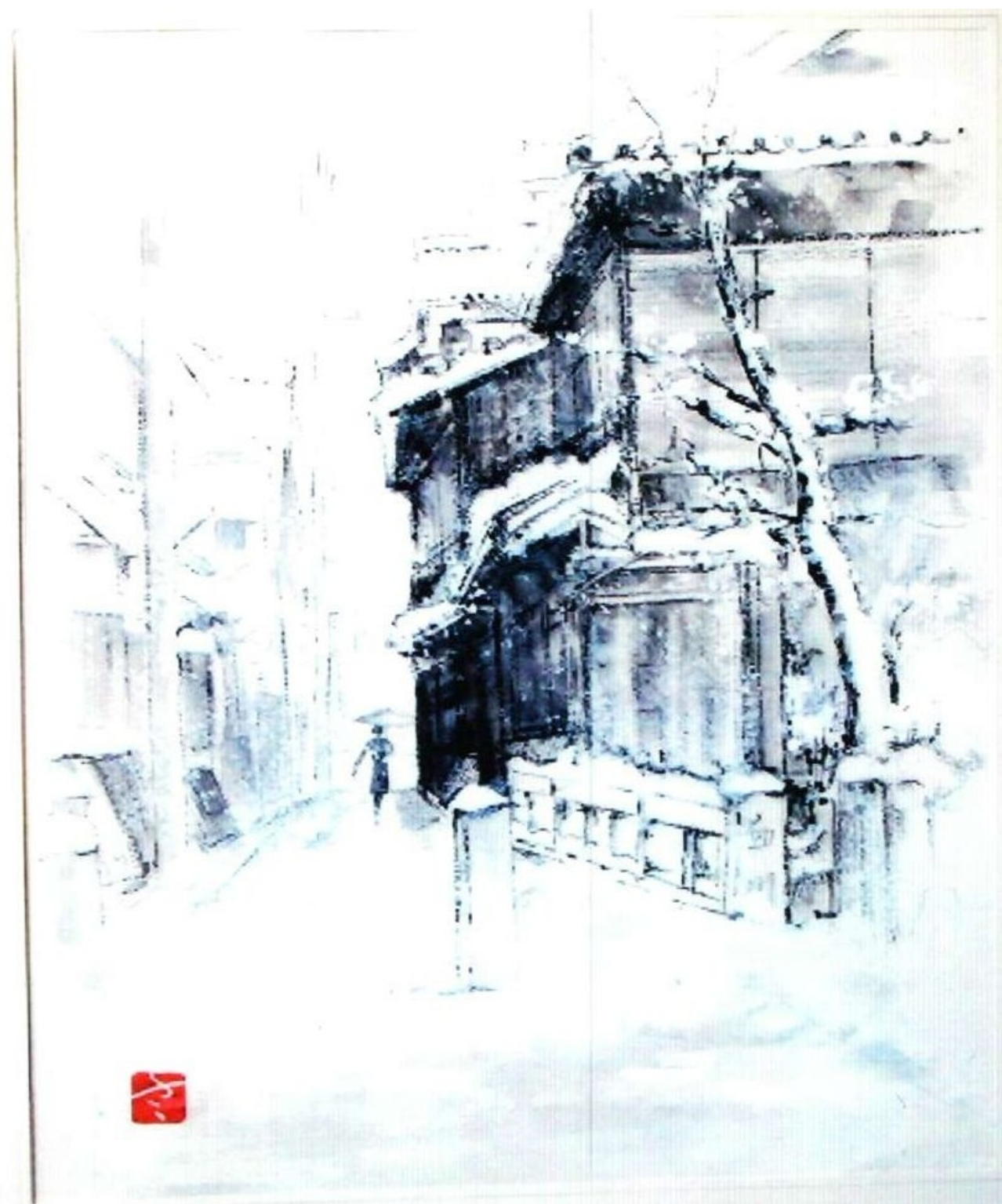




嵐山舟溜まり



巽橋雪の日





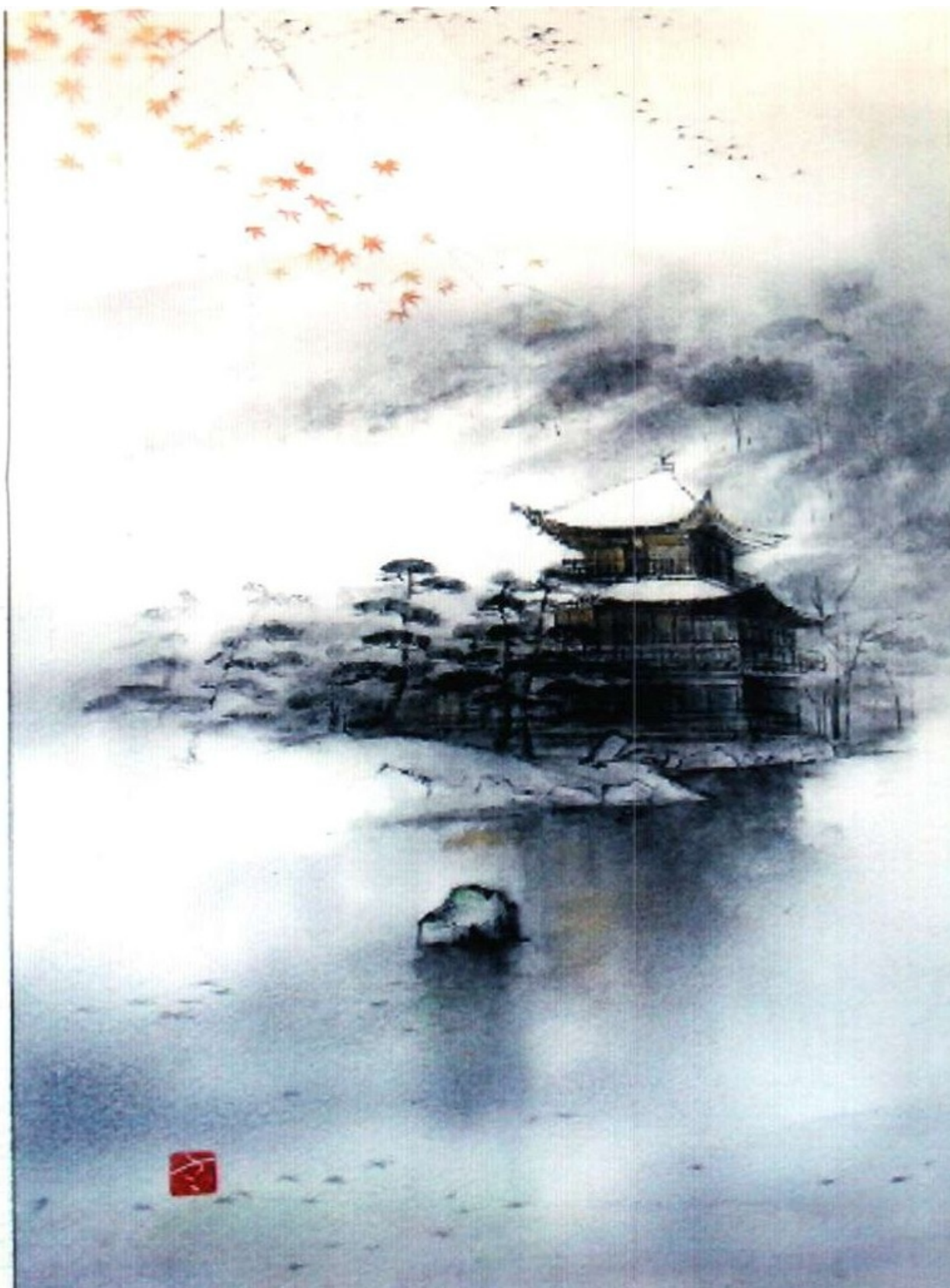
水鏡堂



紙圍 瓷橋

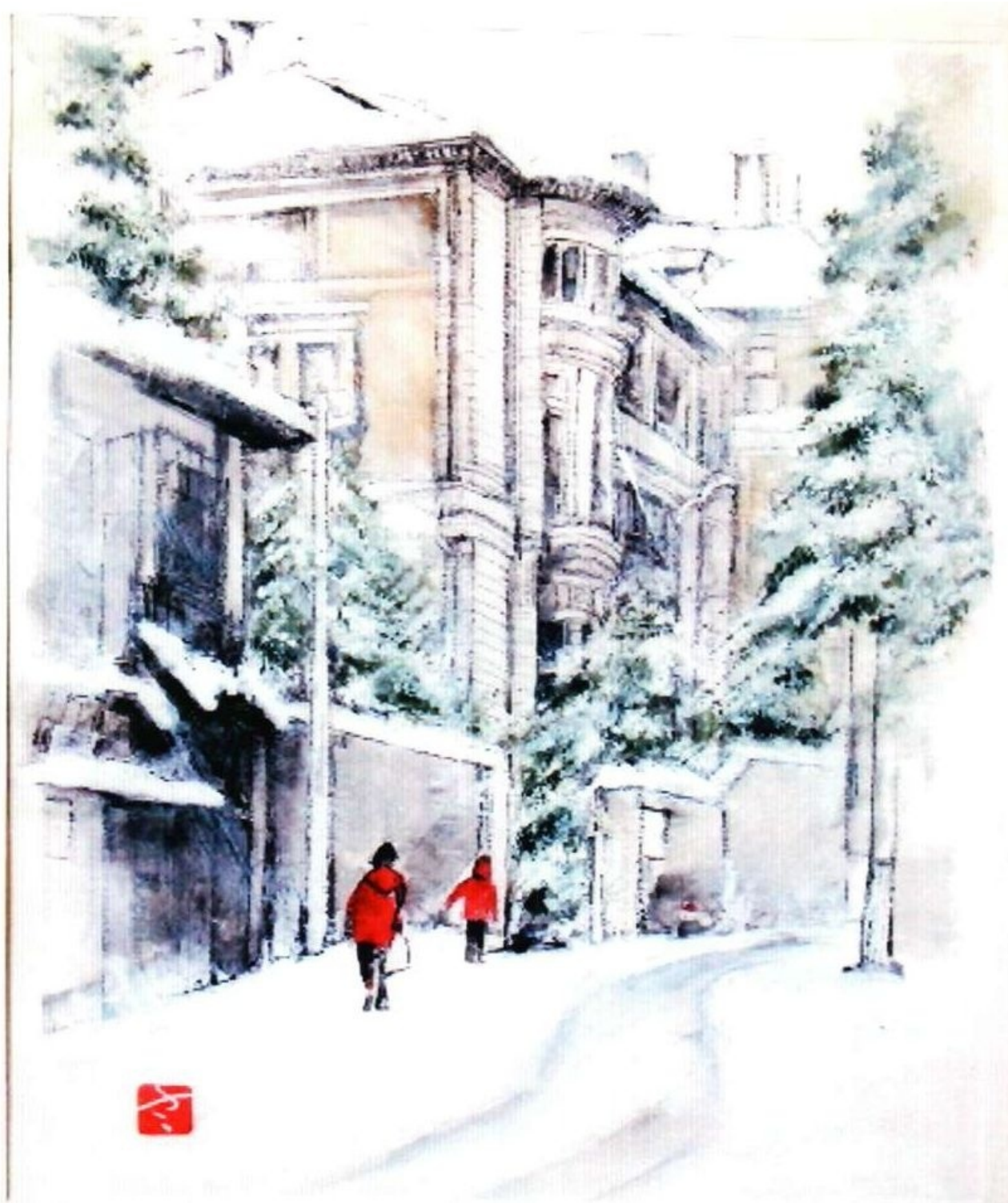
藤尾の桜



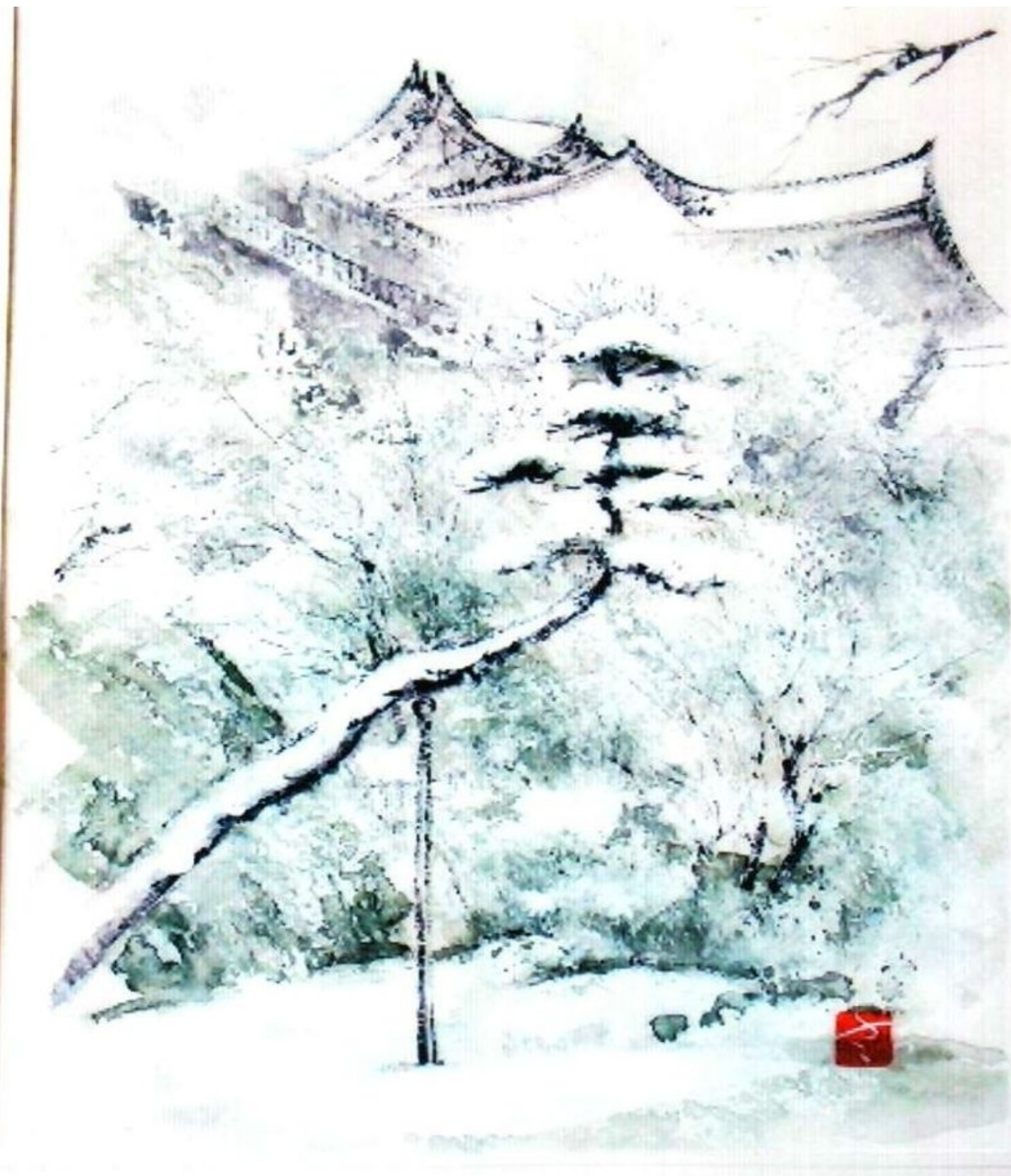


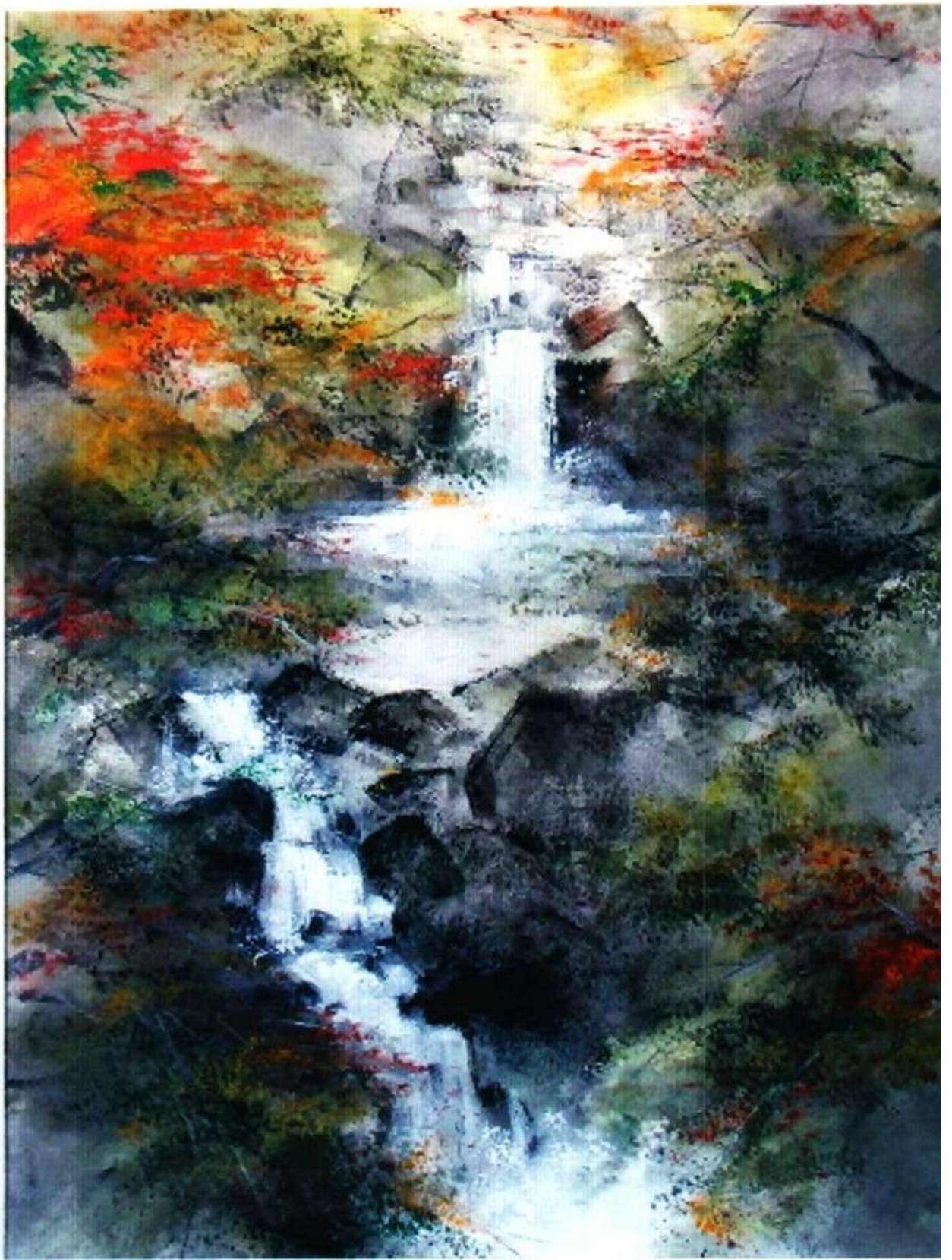
金閣寺

雪の円山道



雪の清水



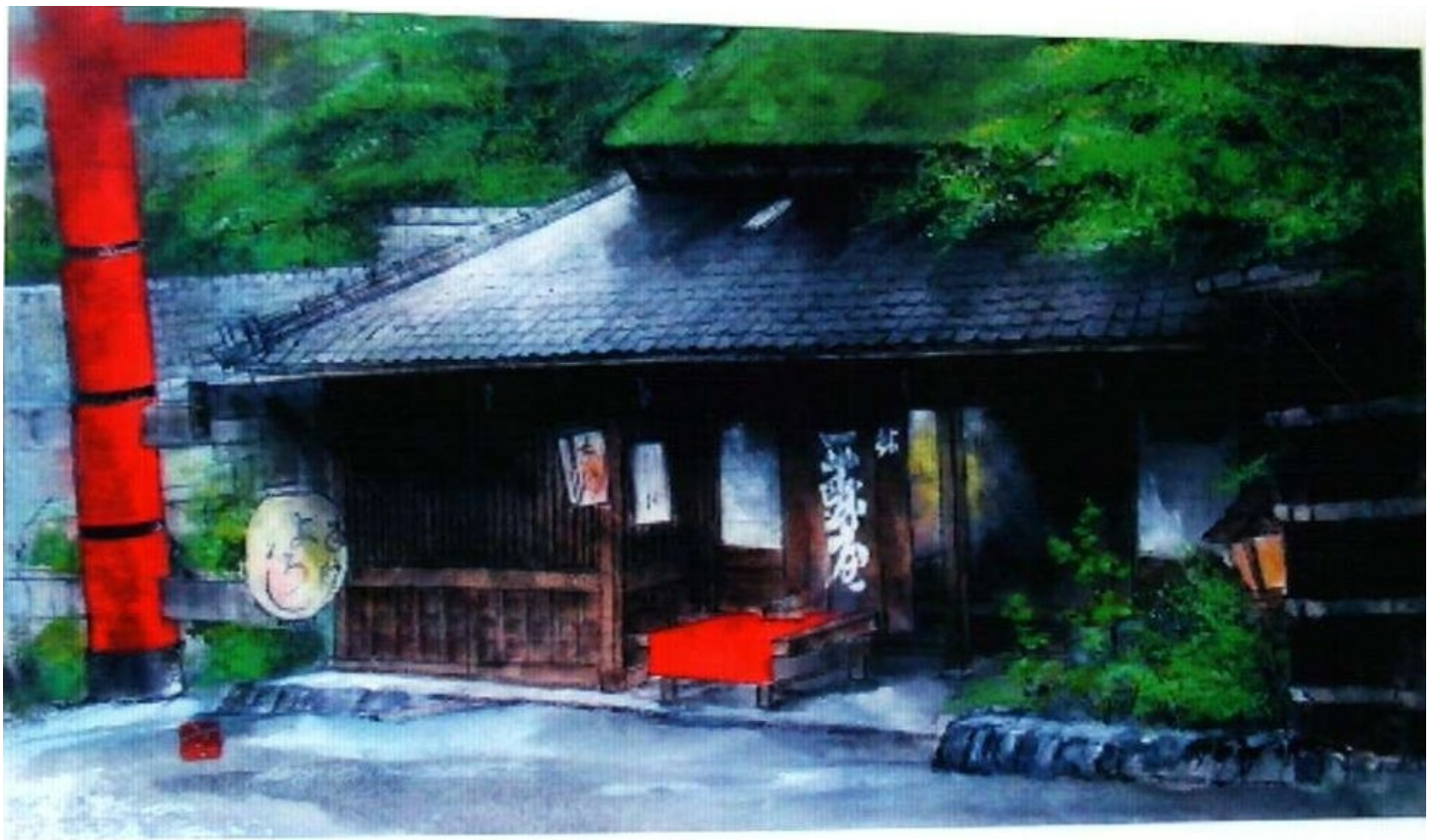


音羽の滝





鮎  
茶  
屋



鳥居本平野屋