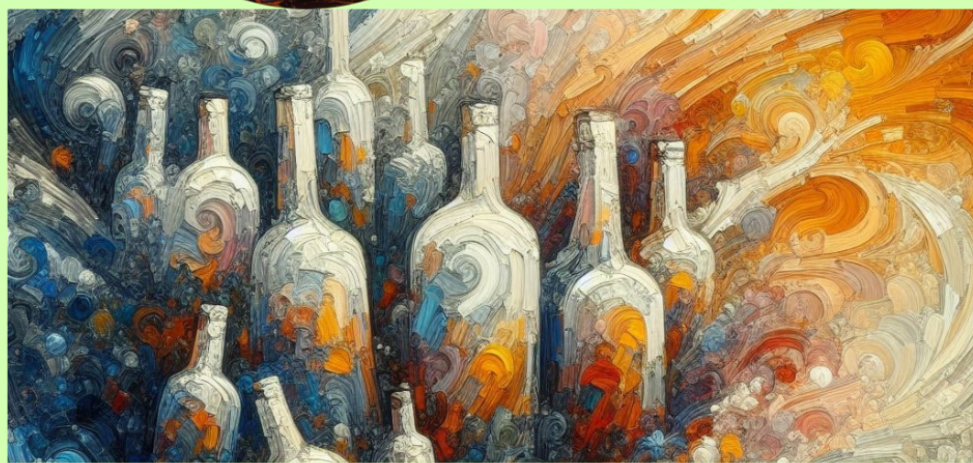


# A I 画集



茜町春彦



# 目次

生成画像 . . . . .	1
プロンプト . . . . .	8
後書き . . . . .	9

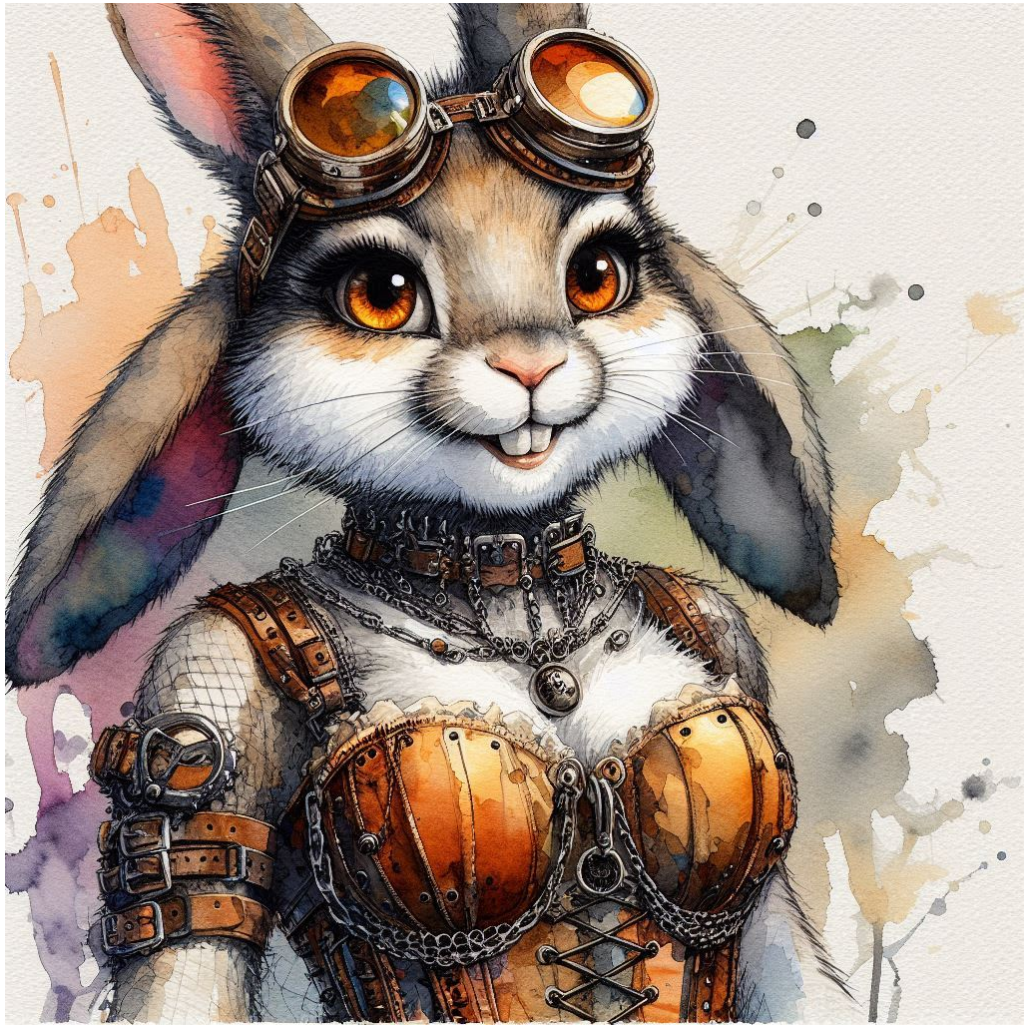




## 生成画像



asAPrabi ( 1 ) .jpg



asAPrabi ( 6 ) .jpg





asGgirl ( 6 ) .jpg



asGgirl1 ( 3 ) .jpg





asHbottle ( 1 ) .jpg





asHbottle ( 6 ) .jpg

## プロンプト

### プロンプト ( Image Creator ) :

The image is an abstract oil painting characterized by a heavily textured surface created through impasto techniques in thick and visible brushstrokes and splatters.

(Leading character: A Japanese woman in sundress with short wavy hair, slanted eyes, smiling, waist shot.)

(Color palette: Ivory white, orange, and several shades of red, with specks of ocher, and hints of cyan, deep blue, indigo.)

(Rendering quality: Feeling tangible and immediate with the chaotic composition.)

### プロンプト ( ImageFX ) :

The image is an abstract oil painting characterized by a heavily textured surface created through impasto techniques in thick and visible brushstrokes and splatters.

(Leading character: Poetic and fantastic imagery with a warped shape of a Japanese woman in sundress with short wavy hair, slanted eyes, smiling, waist shot.)

(Color palette: Dominant colors are ivory white, scarlet, pink, golden yellow, dark red, and several shades of orange. The colors are applied in large and organic swatches that often overlap, with smaller specks and drips of black. Accent colors are hints of light blue, deep blue, indigo blue, sky blue, cyan, azure, pale blue.)

(Rendering quality: Feeling tangible and immediate with the chaotic composition.)

### プロンプト ( Image Creator ) :

The image is an abstract oil painting characterized by a heavily textured surface created through impasto techniques in thick and visible brushstrokes and splatters.

(Leading character: Poetic and fantastic imagery with a warped and distorted shape of bottles.)

(Color palette: Dominant colors are white and several shades of orange. Accent colors are hints of light blue, deep blue, indigo blue, sky blue, cyan.)

(Rendering quality: Feeling tangible and immediate.)

### プロンプト ( ImageFX ) :

The image is an abstract oil painting characterized by a heavily textured surface created through impasto techniques in thick and visible brushstrokes and splatters.

(Leading character: Poetic and fantastic imagery with a warped and distorted shape of bottles.)

(Color palette: Dominant colors are white, scarlet, golden yellow, dark red, and several shades of orange. The colors are applied in large and organic swatches that often overlap, with smaller specks and drips of black. Accent colors are hints of light blue, deep blue, indigo blue, sky blue, cyan.)

(Rendering quality: Feeling tangible and immediate with the chaotic composition.)

プロンプト ( Image Creator & ImageFX ) :

An anthropomorphic female rabbit, her big brown eyes, smiling. She is wearing her steampunk-style goggles and her sundress made of leather, pinions, chains, front laces.

(Image Style: Watercolor, illustration, minimalism)

(Color palette: Dominant colors are warm tones of yellow, red and orange, and hints of white, blue, black. Accent colors are purple and green.)

(Rendering quality: Feeling tangible and immediate with the chaotic composition.)

## 後書き

A I 画集 1 2 5 具象絵画 @Copilot & ImageFX + プロンプト

画像生成 : Image Creator ( マイクロソフト )、ImageFX ( グーグル )

著作者 : 茜町春彦 ( あかねまち はるひこ ) と申します。

2004 年より活動を始めたフリーランスのライター&イラストレーターです。独自のアイデア・考察を社会に提示することをミッションとし、平等で自由な世界の構築を目指して創作活動を行なっております。また、下記 WEB サイトに於いても、デジタル作品を公開しております。

n o t e カクヨム エブリスタ はてなブログ 楽天 Kobo 電子書籍ストア Face-  
book ページ YouTube

その他 :

製品名等はメーカー等の登録商標等です。

本書は著作権法により保護されています。

2 0 2 5 年 8 月 9 日 発行

---

A I 画集 1 2 5 具象絵画 @Copilot & ImageFX+プロンプト

---

著 者 茜町春彦

制 作 Puboo  
発行所 デザインエッグ株式会社

---