





# 目次

生成画像 . . . . .	1
プロンプト . . . . .	9
後書き . . . . .	11





## 生成画像



bott13.jpg



buss11.jpg



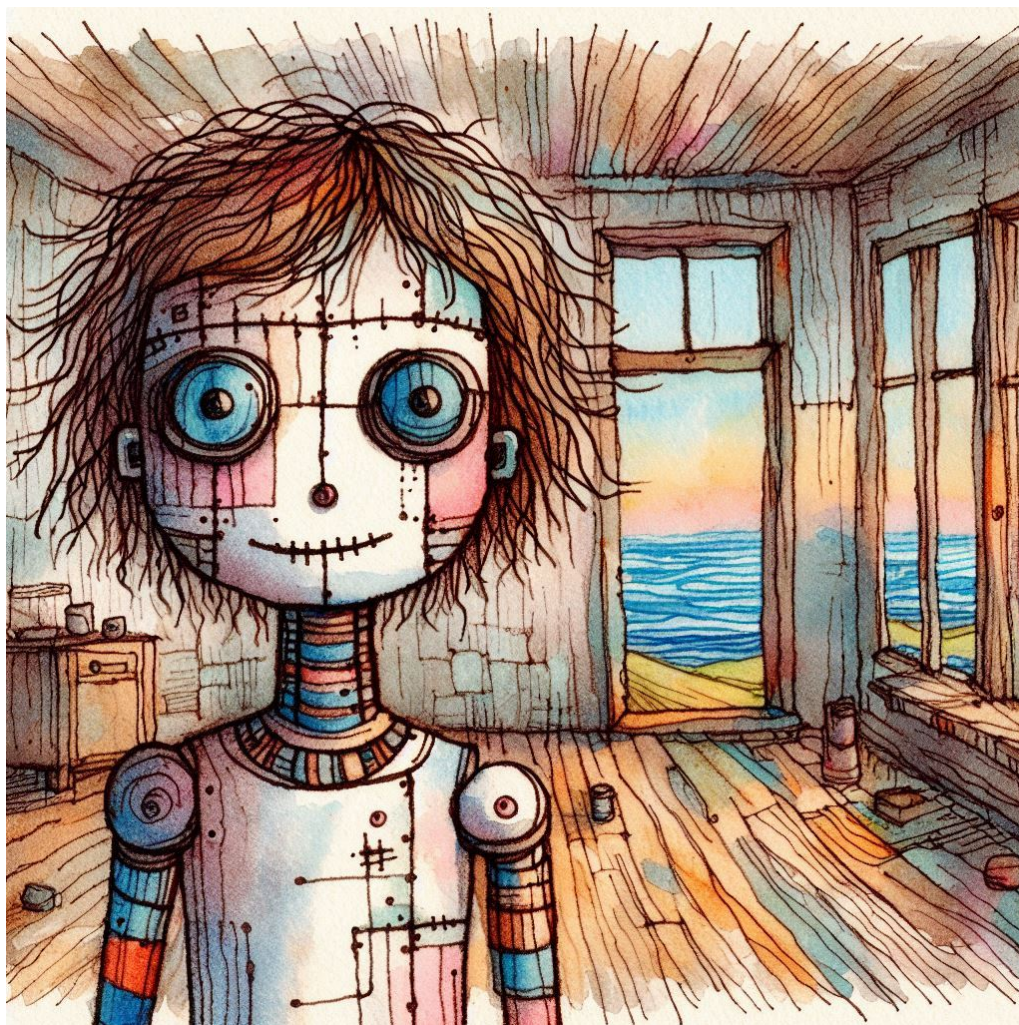


coff11.jpg



coffe11.jpg





cyb11.jpg



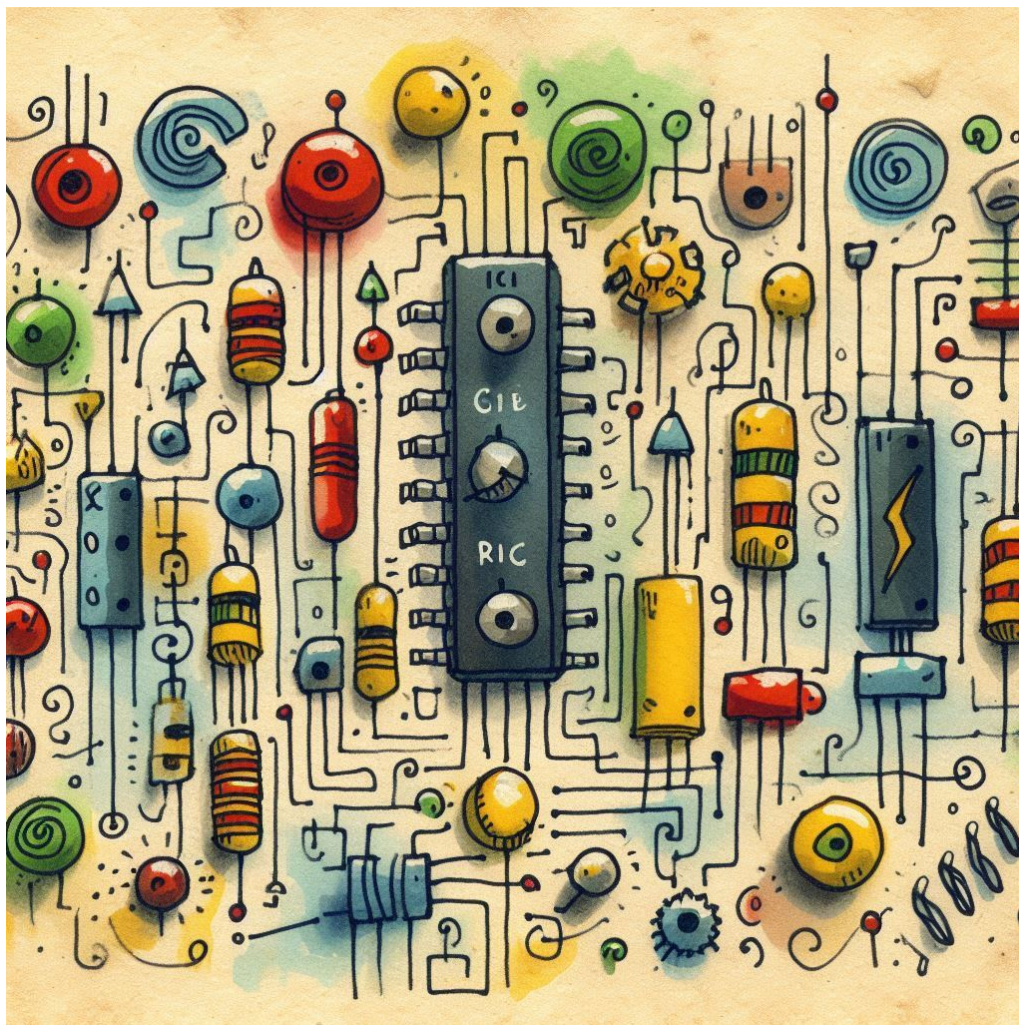
jaz12.jpg





park13.jpg



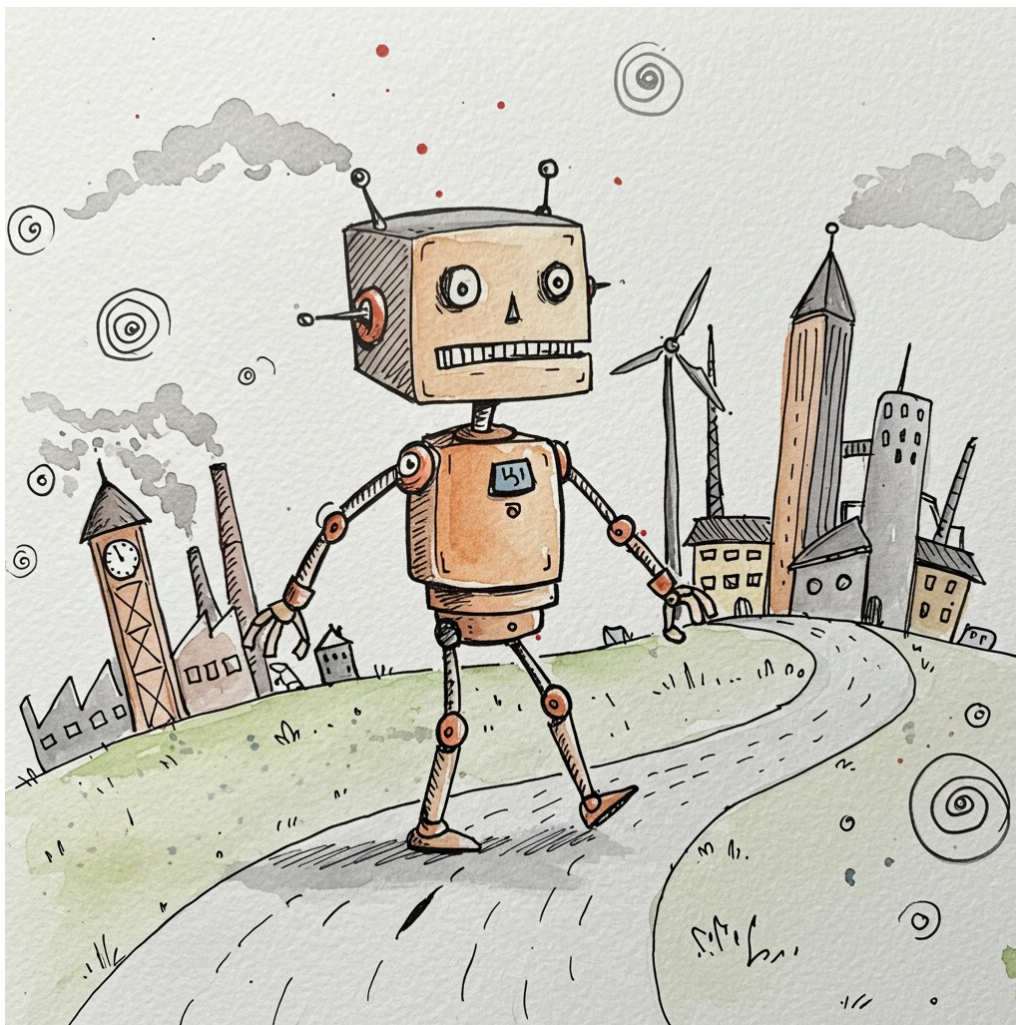


radio11.jpg



regi13.jpg





robo51.jpeg

## プロンプト

プロンプト（Image Creator & ImageFX）：

A simple, clumsy watercolor-pencil drawing of “A whiskey bottle, an old dictionary, a pear. They are placed on the table.” with scribbled lines, dotted lines, naive proportions, strange spirals, warped hatching, random colors, the bleeding and roughness of the watercolor, whimsical charm, uneasy expression, and rhythmically repeated marks on a paper background. (Naive art style)

プロンプト（ Image Creator & ImageFX ）：

A clumsy ink drawing of “A woman in a tank top and jeans, curly hair in bunches. A man in casual clothes. They are standing at a bus stop in front of a college.” The drawing should be drawn with scribbled lines, woolly lines, strange proportions, naive charm, whimsical expression, and complicated-looking marks on a paper background. The drawing should be colored with watercolor in random colors, and it expresses blurring and roughness.

プロンプト（ Image Creator & ImageFX ）：

A simple, clumsy ink drawing of “A woman in a sundress, slanted eyes, wavy hair. A man in casual clothes, short hair. They are sitting on the chairs at a table in a coffee shop with windows in the rainy cityscape.” with scribbled lines, woolly lines, streamlined shapes, random colors, strange proportions, naive charm, uneasy expression, and whimsical marks on a paper background. The ink drawing is colored with watercolor, and it expresses blurring and roughness. (Naive art)

プロンプト（ Image Creator & ImageFX ）：

A simple, clumsy watercolor-pencil drawing of “A young waitress, wavy hair in bunches, shop’s uniform with logo mark, her slender face, round eyes, faint smile. She is carrying a cup of coffee on the tray in the coffee shop.” with scribbled lines, random colors, naive proportions, the bleeding and roughness of the watercolor, strange charm, uneasy expression, and whimsical marks on a paper background. (Naive art style)

プロンプト（ Image Creator & ImageFX ）：

A simple, clumsy watercolor-pencil drawing of “A female cyborg, wavy short hair, slanted eyes, smiling, standing in the rotten room of a wooden house with Oceanview windows.” with scribbled lines, woolly lines, dotted lines, streamlined shapes, random colors, naive proportions, the bleeding and roughness of the watercolor, strange charm, uneasy expression, and whimsical marks on a paper background. (Naive art style)

プロンプト（ Image Creator & ImageFX ）：

A simple, clumsy watercolor-pencil drawing of “A female jazz dancer, wavy short hair, her slender face, slanted eyes, faint smile. She is dancing in the dance studio.” with scribbled lines, wavy lines, woolly lines, dotted lines, streamlines, random colors, naive proportions, the bleeding and roughness of the watercolor, strange charms, rhythmically repeated decoration, uneasy expression, and whimsical marks on a paper background. (Surrealism)

プロンプト（ Image Creator & ImageFX ）：

A simple, clumsy ink drawing of “A woman in a tank top and jeans, an updo. A

man in casual clothes, curly short hair. They are sitting on the bench by a cherry tree in a park under a daytime sky with clouds.” with scribbled lines, woolly lines, streamlined shapes, random colors, strange proportions, naive charm, uneasy expression, and whimsical marks on a paper background. The ink drawing is colored with watercolor, and it expresses blurring and roughness. (Naive art)

プロンプト ( Image Creator & ImageFX ) :

A simple, clumsy watercolor drawing of “A circuit board of transistor radio, with diodes, resistors, capacitors.” with scribbled lines, random colors, naive proportions, the bleeding and roughness of the watercolor, strange charm, uneasy expression, rhythmically repeated spirals, and whimsical marks on a paper background. (Naive art)

プロンプト ( Image Creator & ImageFX ) :

A simple, clumsy ink drawing of “Japanese women in sundresses, wavy hair, round eyes. The women are standing in line at the supermarket checkout, and they are chatting.” The drawing should be drawn with scribbled lines, woolly lines, and uneasy lines on a paper background. The drawing should have naive proportions and whimsical marks. The drawing is colored with watercolor, and it expresses blurring and roughness.

プロンプト ( Image Creator & ImageFX ) :

A simple, clumsy watercolor drawing of “A robot with cubic head, spherical body, and flexible-hose-like limbs. The robot is walking along the curved road in an industrial area with factories, windmills, clock towers, skyscrapers.” with scribbled lines, random colors, naive proportions, the bleeding and roughness of the watercolor, strange charm, uneasy expression, rhythmically repeated spirals, and whimsical marks on a paper background. (Naive art)

## 後書き

A I 画集 1 1 0 ナイブアート @Copilot & ImageFX + プロンプト

画像生成 : Image Creator ( マイクロソフト )、ImageFX ( グーグル )

著作者 : 茜町春彦 ( あかねまち はるひこ ) と申します。

2004 年より活動を始めたフリーランスのライター&イラストレーターです。独自のアイデア・考察を社会に提示することをミッションとし、平等で自由な世界の構築を目指し

て創作活動を行なっております。また、下記 WEB サイトに於いても、デジタル作品を公開しております。

n o t e   カクヨム   エブリスタ   はてなブログ   楽天 Kobo 電子書籍ストア   Face-  
book ページ   YouTube

その他：

製品名等はメーカー等の登録商標等です。

本書は著作権法により保護されています。

2 0 2 5 年 4 月 5 日 発行





---

A I 画集 1 1 0 ナイーブアート @Copilot & ImageFX+プロンプト

---

著 者 茜町春彦

制 作 Puboo  
発行所 デザインエッグ株式会社

---